

www.redangus.org.au

RED ANGUS

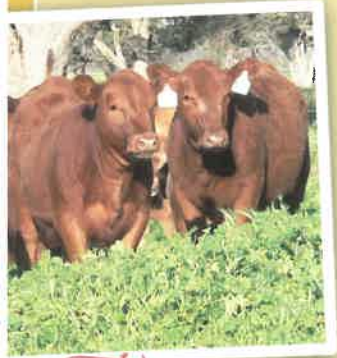
REAL ADVANTAGES



RED ANGUS CATTLE have all the attributes of Angus with the addition of the homozygous red coat colour. Red Angus cattle excel for temperament, maternal qualities and carcase characteristics. Red Angus and their crosses are keenly sought after by commercial producers as a cornerstone for their production system. Red Angus have the ability to adapt to a vast range of the climatic conditions to be encountered across Australia.

HOMOZYGOUS RED COLOUR

Red Angus when crossed with other red breeds will produce red-coated calves. This has an advantage when selling through saleyards of evenness in the line of sale cattle. The red coat colour reflects the sunlight better than darker breeds and makes the Red Angus a better option for tropical based systems. Red Angus cattle have advantages over Angus in buffalo fly areas where the buffalo fly is attracted more to black hided cattle. The lighter Red colour also assists in handling heat conditions better than black hided cattle.



TEMPERAMENT

Red Angus cattle are considered by breeders to be gentle natured and easy cattle to work. Worldwide reports support the docile nature of the Red Angus breed. Australian research conducted by CSIRO Livestock Industries (CLI) and the Co-operative Research Centre for Beef and Cattle Quality (Beef CRC) at Rockhampton have found a positive relationship between 'good' cattle temperament, improved productivity levels and overall meat quality whereas cattle with poorer temperaments have comparatively lower average daily weight gains and reduced carcase weights. "Poor temperament lowers cattle profitability through increased production costs - for example, mustering, maintaining cattle handling facilities and the increased risk of injury to the cattle and their handlers,"



FERTILITY & MATERNAL

Red Angus females reach puberty at a young age, are highly fertile and are renowned for their longevity in the herd. Red Angus females have excellent milk production and have a strong maternal instinct. Combined with easy calving attributes Red Angus females are keenly sought after.



CARCASE QUALITY

High quality beef production is synonymous with the Angus breed worldwide. Whether from pasture or feedlot Red Angus beef is highly desired for meat quality. Red Angus like all Angus lay down intra muscular marbling, which assists in the eating quality of the meat. Red Angus has the ability to be targeted at a range of market specifications. From the light domestic production through to heavy export specifications Red Angus can be incorporated into your programme to suit your environmental constraints.

FURTHER INFORMATION CAN BE
OBTAINED FROM THE WEBSITE
www.redangus.org.au
or by contacting the Red Angus office
Email - red.angus@abri.une.edu.au
Telephone - (02) 6773 3022

